

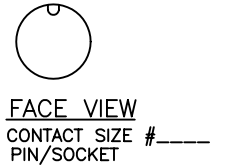
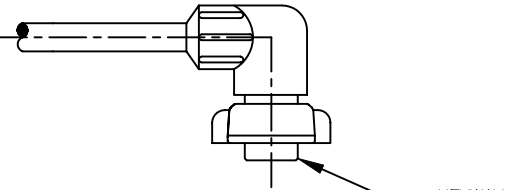
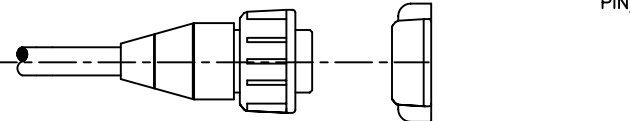
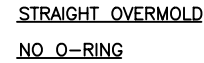
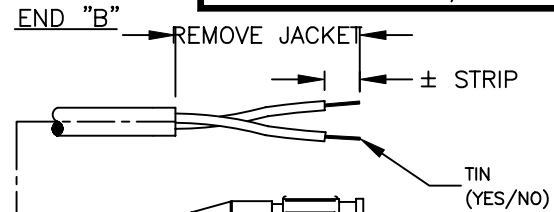
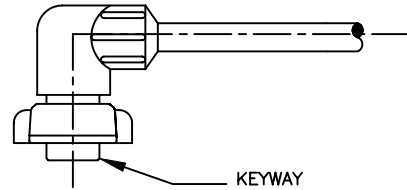
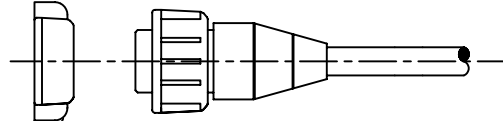
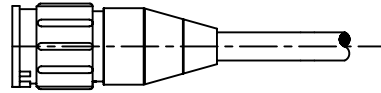
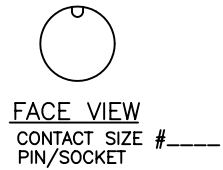
PART NUMBER:

QUOTATION/SAMPLE DRAWING

NOTES & SPECIFICATIONS:

1. CABLE TO BE COILED/BUNDLED.
2. CUSTOMER PART NO.: _____ REV. _____

END "A"



MEGA-CON-X
MAXI-CON-X
MINI-CON-X
MULTI-CON-X
MICRO-CON-X

CUT BLUNT

CABLE INFORMATION	
PART NO.:	
CABLE O.D.:	
JKT COLOR:	
JKT MATERIAL:	
STRANDING:	
NO. COND.:	
COND. INSUL.:	
TINNED:	
SHIELD	
GAUGE:	
OTHER:	

WIRE COLOR CODE END "A"

PIN #1	PIN #2	PIN #3	PIN #4	PIN #5	PIN #6	PIN #7	PIN #8	PIN #9	PIN #10
PIN #11	PIN #12	PIN #13	PIN #14	PIN #15	PIN #16	PIN #17	PIN #18	PIN #19	PIN #20

WIRE COLOR CODE END "B"

PIN #1	PIN #2	PIN #3	PIN #4	PIN #5	PIN #6	PIN #7	PIN #8	PIN #9	PIN #10
PIN #11	PIN #12	PIN #13	PIN #14	PIN #15	PIN #16	PIN #17	PIN #18	PIN #19	PIN #20

DO NOT SCALE PRINT		REV.	DATE	DESCRIPTION	INIT.
NOTICE - All information illustrated or revealed on this document is proprietary, and is the exclusive property of the CONXALL CORPORATION. Unauthorized duplication or distribution of the information contained in this document is prohibited.		DRAWN BY: _____ DATE: 8/10/94		601 E. WILDWOOD VILLA PARK, IL 60181	
		CHECKED BY: _____			
UNLESS OTHERWISE SPECIFIED ALL UNITS ARE IN FEET, INCHES, AND FRACTIONS OF INCHES.		APPROVED BY: _____		TITLE: MEGA-CON-X MAXI-CON-X MINI-CON-X MULTI-CON-X MICRO-CON-X	
		SCALE: NTS SIZE: A SHEET: 1 OF 1	FILE: QUOTE10 DISK: _____	CUSTOMER: _____ PART NUMBER: _____	REV. _____