

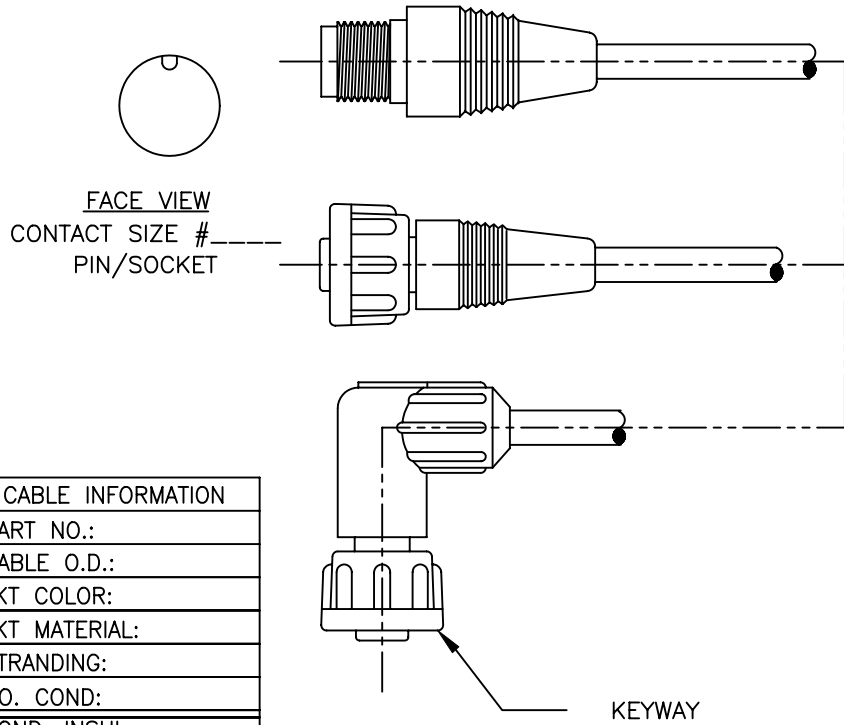
PART NUMBER:

QUOTATION/SAMPLE DRAWING

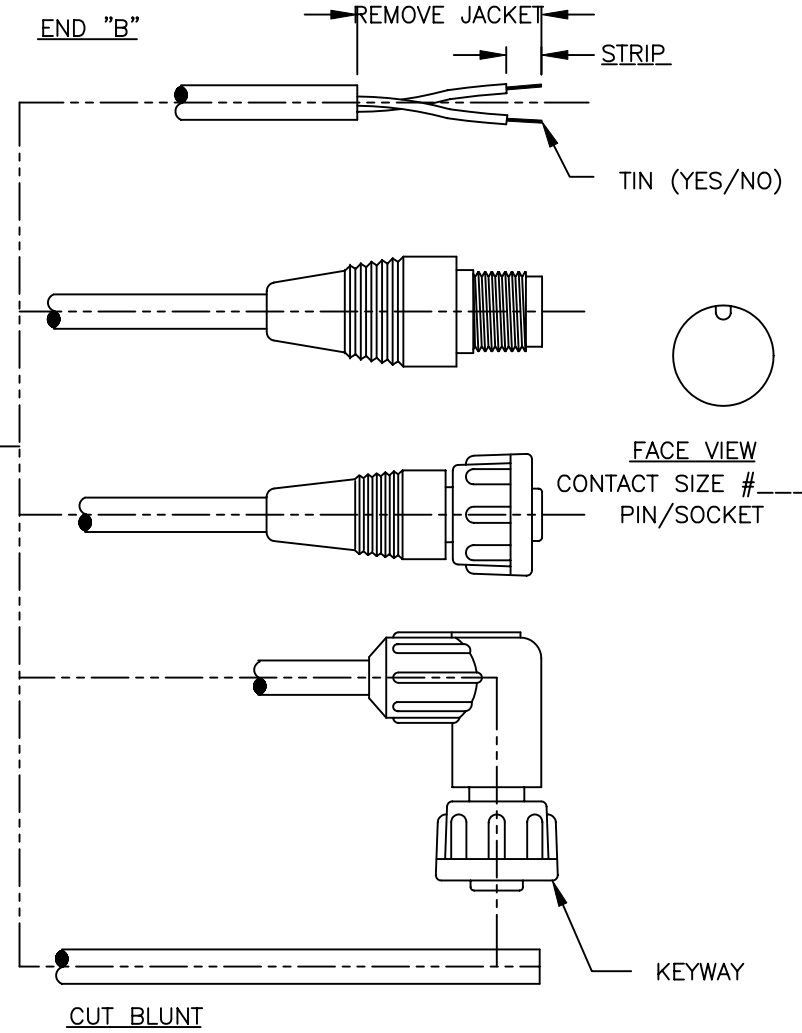
NOTES & SPECIFICATIONS:

- 1. CABLE TO BE COILED/BUNDLED.
- 2. CUSTOMER PART NO.: \_\_\_\_\_ REV. \_\_\_\_\_

END "A"




END "B"



CABLE INFORMATION	
PART NO.:	
CABLE O.D.:	
JKT COLOR:	
JKT MATERIAL:	
STRANDING:	
NO. COND:	
COND. INSUL.:	
TINNED:	
SHIELD	
GAUGE:	
OTHER:	

WIRE COLOR CODE "END A"				
PIN #1	PIN #2	PIN #3	PIN #4	PIN #5
WIRE COLOR CODE "END B"				
PIN #1	PIN #2	PIN #3	PIN #4	PIN #5

AGENCY APPROVALS	
CABLE/WIRE	ASSEMBLY
UL:	
CSA:	
OTHER:	

DO NOT SCALE PRINT		REV.	DATE	DESCRIPTION	INIT.
NOTICE - All information illustrated or revealed on this document is proprietary, and is the exclusive property of the CONXALL CORPORATION. Unauthorized duplication or distribution of the information contained in this document is prohibited.	DRAWN BY:	DATE:		 601 E. WILDWOOD VILLA PARK, IL 60181	TITLE: "MICRO-MIZER"
	G.A.	8/11/94			
CHECKED BY:	APPROVED BY:		CUSTOMER:		
UNLESS OTHERWISE SPECIFIED ALL UNITS ARE IN FEET, INCHES, AND FRACTIONS OF INCHES.	SCALE	SIZE	SHEET	PART NUMBER:	REV.
	NTS	A	1 OF 1		
	FILE:	DISK:			
	QUOTE12				