



### SC800A ACTIVE INSTRUMENT DIRECT BOX

Switchcraft's SC800A Active Instrument Direct Box converts the unbalanced outputs of musical Instruments to balanced, mic level signals that can be connected to audio consoles and mic preamps. This product contains an amplifier circuit and requires a 48V Phantom power supply for operation. When phantom power is applied, the 48V phantom power LED will illuminate indicating the unit is powered on.

Additional features include a 20dB input pad and a ground lift switch for eliminating grounding issues common with unbalanced equipment.

#### CONTROLS:

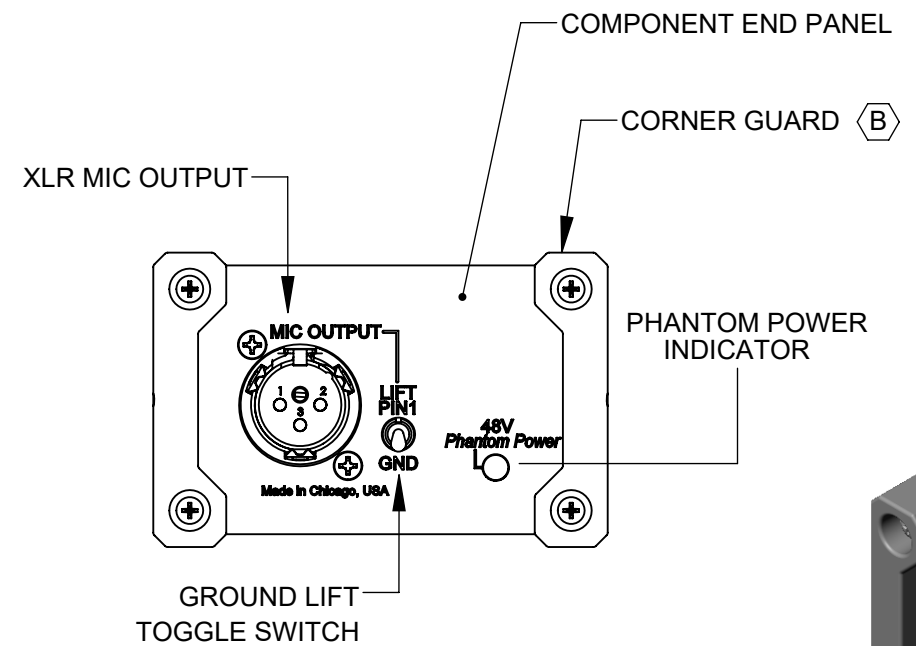
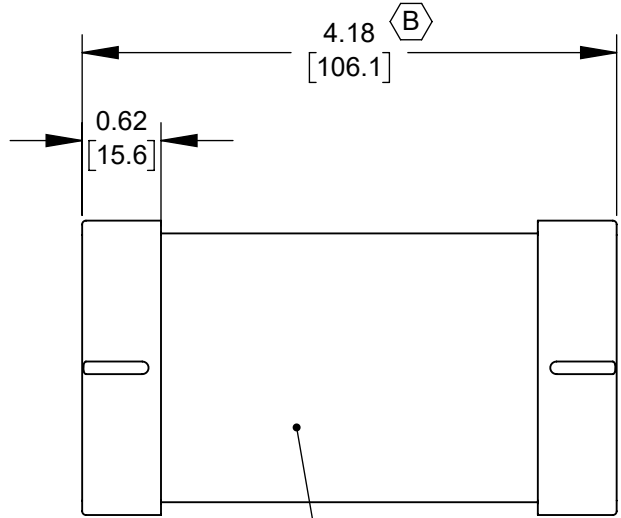
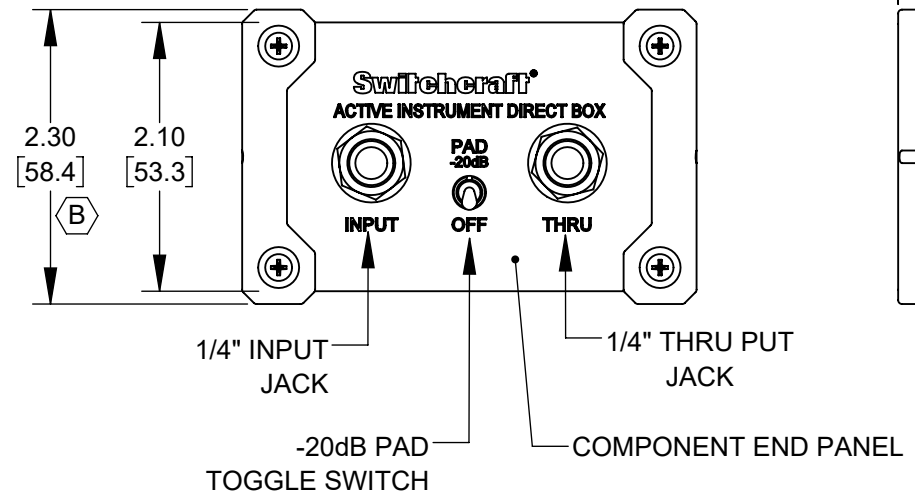
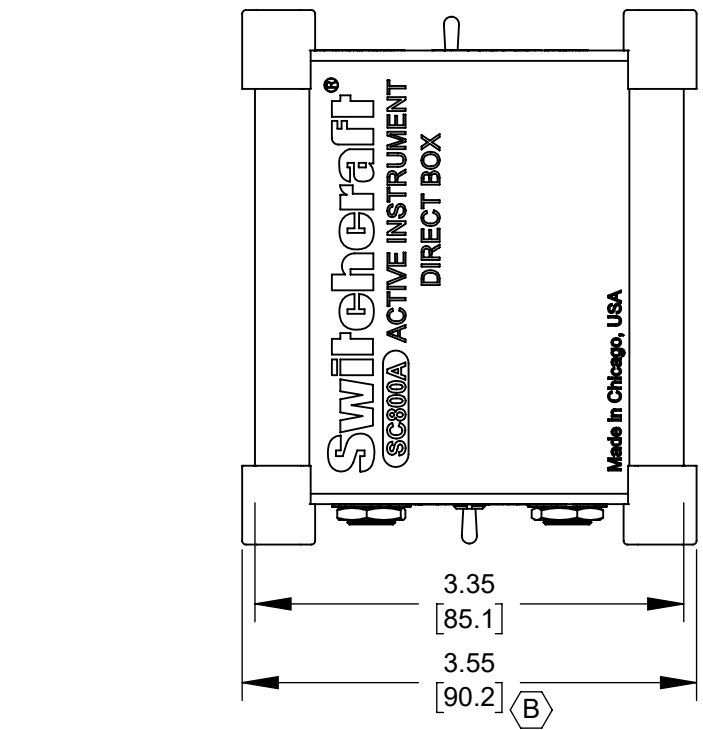
**INPUT:** 1/4" Mono (TS)

**THRUPUT:** 1/4" Mono (TS)

**OUTPUT:** 3- Pin XLR

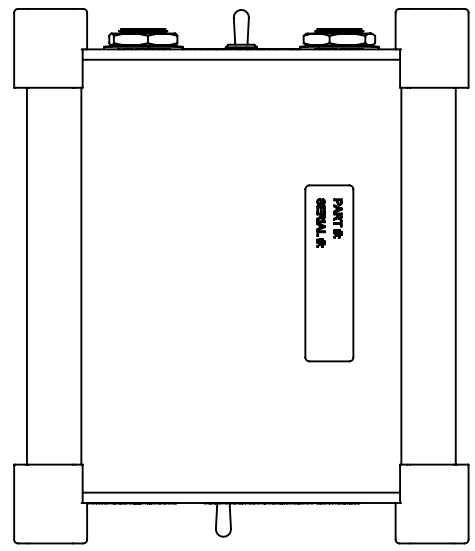
**PAD:** 20dB Input Pad

**GROUND LIFT:** XLR Pin 1 Lift





#### NOTES:

1. THE XLR CONNECTOR IS WIRED PIN-1 GROUND, PIN-2 HOT AND PIN-3 COLD.
2. MATERIALS:  
 HOUSING AND COMPONENT END PANELS - BLACK ANODIZED ALUMINUM  
 CORNER GUARDS - TPE, GRAY
3. LASER ETCHED ARTWORK WITH WHITE TEXT.
4. THIS PRODUCT IS RoHS COMPLIANT.



**CUSTOMER DRAWING**

					THIS DRAWING DESCRIBES A DESIGN CONSIDERED PROPRIETARY IN NATURE, DEVELOPED AND MANUFACTURED BY SWITCHCRAFT INC. AND IS RELEASED ON A CONFIDENTIAL BASIS FOR IDENTIFICATION PURPOSES ONLY.					
					SIZE	WIDTH	MULT	LBS/M	TEMPER	
					FINISH			MATERIAL		
					SPEC No.			SPEC No.		
					FIRST USED ON		SCALE			
							2:3			
DATE DRAWN		BY	CHKD	APVD						
12/13/13		AM	PC	TJK						
			03/14/17	03/14/17	SHEET 1 OF 3					
REV					NAME			PART No.		REV
ECO NUMBER					ACTIVE INSTRUMENT DIRECT BOX, RoHS			SC800A		C
DATE					DO NOT SCALE DRAWING					
BY					SolidWorks CAD File 					
APVD										
REVISIONS										




# SC800A Active Instrument Direct Box Audio Specifications

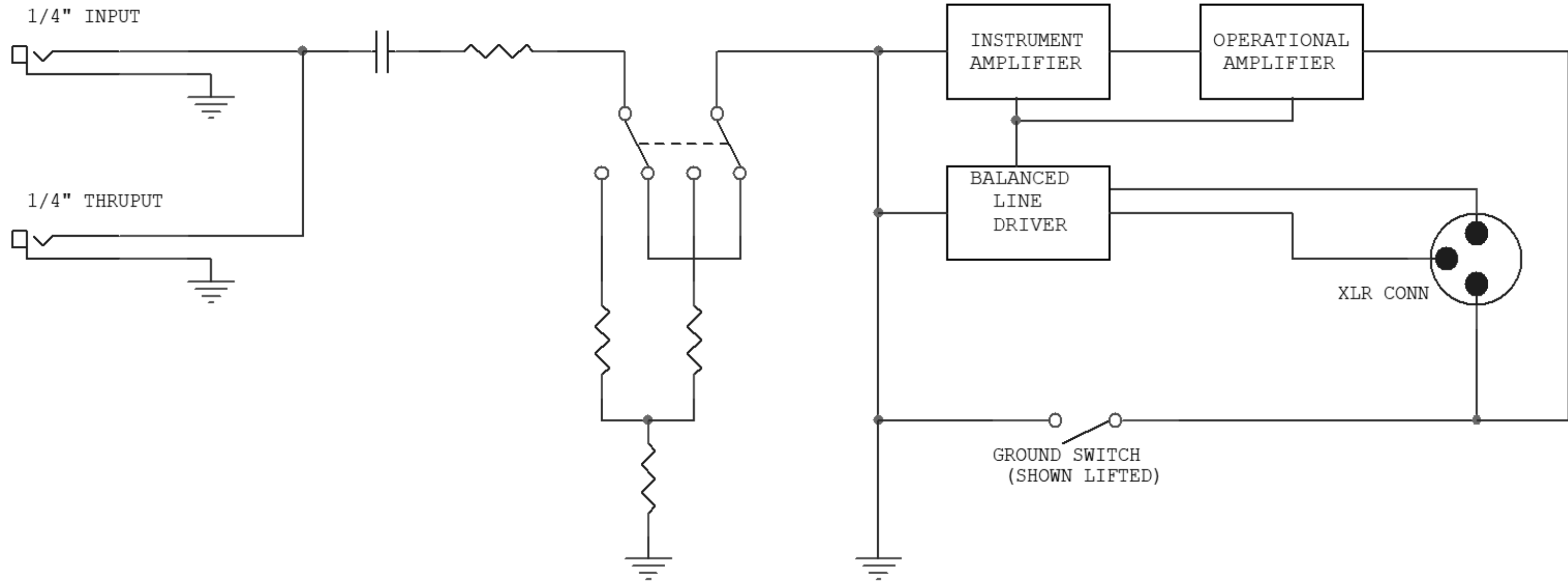
# Switchcraft®

Parameter	Performance	Conditions
Frequency Response	30Hz - 30kHz	+/-0.3dB, ref 1kHz
Total Harmonic Distortion + Noise	< 0.008% <0.04%	at 1kHz, +4dBu Input, 22kHz Bandwidth at 20Hz, +4dBu Input, 22kHz Bandwidth
Maximum Input Level	+12dBu +32dBu	at 20Hz with 1% THD+Noise With 20dB Pad Engaged
Input Impedance	> 1MΩ	at 1kHz
Output Impedance	< 600Ω	at 1kHz
Common Mode Rejection Ratio (CMRR)	>86dB >65dB	at 60Hz, Input at 60Hz, Output
Deviation from Linear Phase	< 16° < 1° < -12°	at 20Hz at 1Khz at 20kHz
Voltage Gain	+3dB -17dB	+/-1dB +/-1dB with 20dB pad engaged
Pad Attenuation	20dB	+/-1dB

Notes: All measurements were taken with a 25Ω unbalanced source and measured from the XLR with a 1kΩ balanced load.

**CUSTOMER DRAWING**

SCALE 1:2		
DATE DRAWN 12/13/13		
DRAWN BY AM	PART No. SC800A	REV C



**CUSTOMER DRAWING**

SCALE 1:2	<b>Switchcraft</b> <sup>®</sup>	
DATE DRAWN 12/13/13		
DRAWN BY AM	PART No. SC800A	REV C