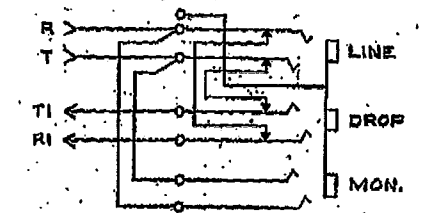
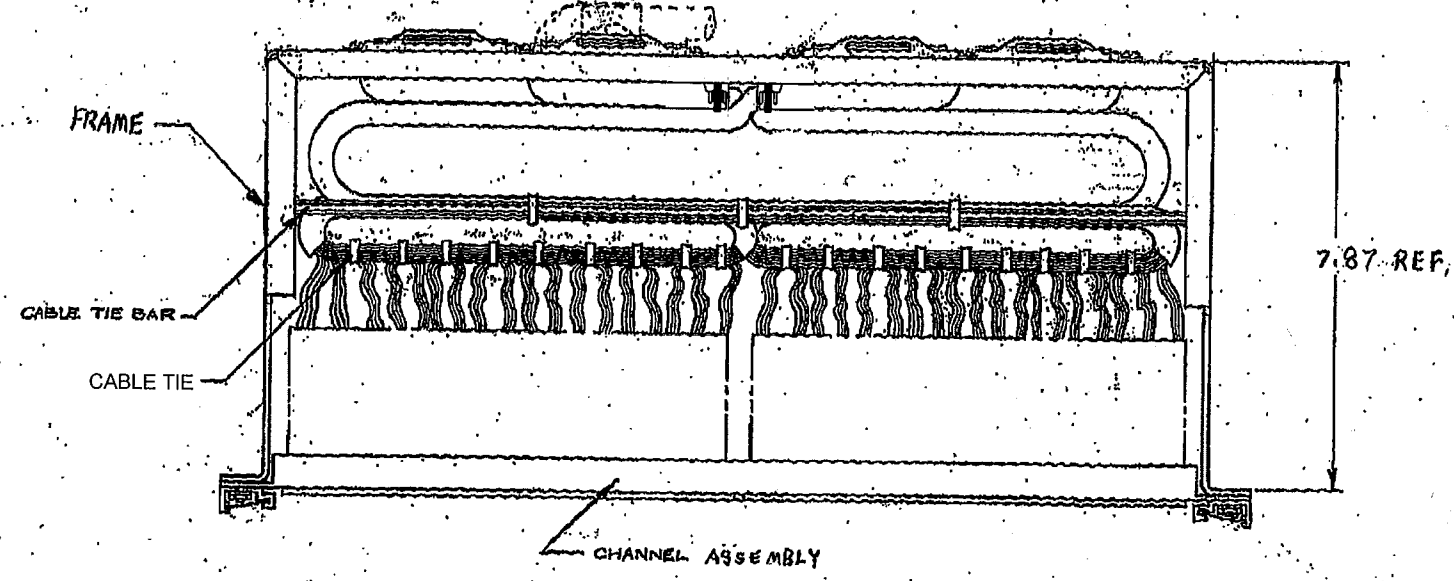
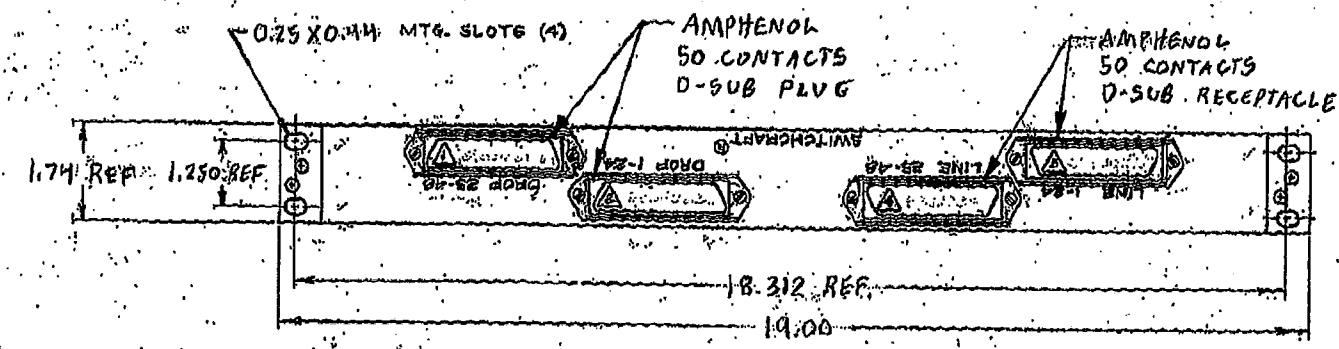


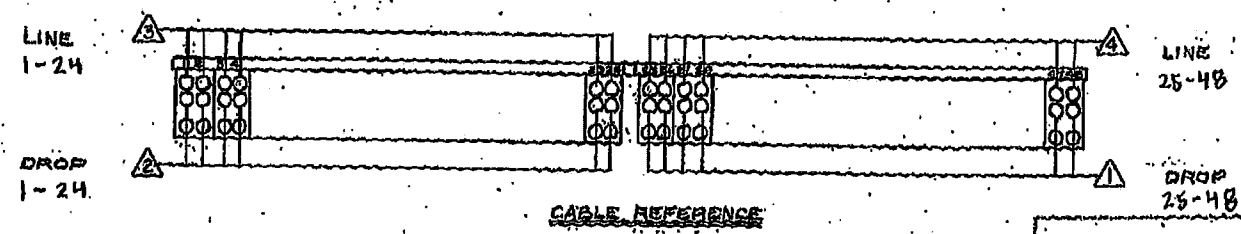
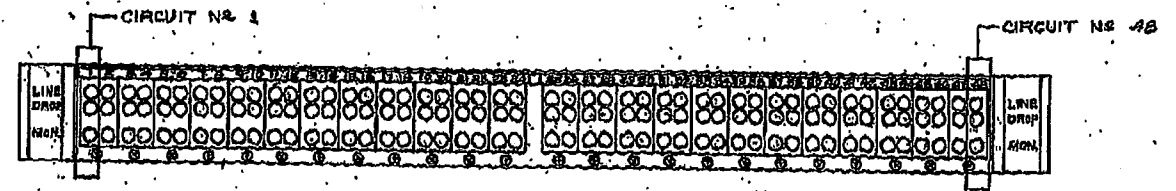
CONNECTION TABLE			
TO PLUG CONNECTOR		FIN	
CKT. 1	DROP	TI 26	
		RI 1	
REPEATED			
CKT. 24	DROP	TI 49	
		RI 24	
CKT. 25	DROP	TI 26	
		RI 1	
REPEATED			
CKT. 48	DROP	TI 49	
		RI 24	

CONNECTION TABLE			
TO RECEPTACLE CONN.		FIN	
CKT. 1	LINE	T 26	
		R 1	
REPEATED			
CKT. 24	LINE	T 49	
		R 24	
CKT. 25	LINE	T 26	
		R 1	
REPEATED			
CKT. 48	LINE	T 49	
		R 24	

REV	DATE	BY	CHKD	DESCRIPTION
1				RELEASED TO PRODUCTION
2				REVISION: 2-WIRE JACKFIELD
3				REVISION: 2-WIRE JACKFIELD
4				REVISION: 2-WIRE JACKFIELD
5				REVISION: 2-WIRE JACKFIELD
6				REVISION: 2-WIRE JACKFIELD
7				REVISION: 2-WIRE JACKFIELD
8				REVISION: 2-WIRE JACKFIELD
9				REVISION: 2-WIRE JACKFIELD
10				REVISION: 2-WIRE JACKFIELD
11				REVISION: 2-WIRE JACKFIELD
12				REVISION: 2-WIRE JACKFIELD
13				REVISION: 2-WIRE JACKFIELD
14				REVISION: 2-WIRE JACKFIELD
15				REVISION: 2-WIRE JACKFIELD
16				REVISION: 2-WIRE JACKFIELD
17				REVISION: 2-WIRE JACKFIELD
18				REVISION: 2-WIRE JACKFIELD
19				REVISION: 2-WIRE JACKFIELD
20				REVISION: 2-WIRE JACKFIELD
21				REVISION: 2-WIRE JACKFIELD
22				REVISION: 2-WIRE JACKFIELD
23				REVISION: 2-WIRE JACKFIELD
24				REVISION: 2-WIRE JACKFIELD
25				REVISION: 2-WIRE JACKFIELD
26				REVISION: 2-WIRE JACKFIELD
27				REVISION: 2-WIRE JACKFIELD
28				REVISION: 2-WIRE JACKFIELD
29				REVISION: 2-WIRE JACKFIELD
30				REVISION: 2-WIRE JACKFIELD
31				REVISION: 2-WIRE JACKFIELD
32				REVISION: 2-WIRE JACKFIELD
33				REVISION: 2-WIRE JACKFIELD
34				REVISION: 2-WIRE JACKFIELD
35				REVISION: 2-WIRE JACKFIELD
36				REVISION: 2-WIRE JACKFIELD
37				REVISION: 2-WIRE JACKFIELD
38				REVISION: 2-WIRE JACKFIELD
39				REVISION: 2-WIRE JACKFIELD
40				REVISION: 2-WIRE JACKFIELD
41				REVISION: 2-WIRE JACKFIELD
42				REVISION: 2-WIRE JACKFIELD
43				REVISION: 2-WIRE JACKFIELD
44				REVISION: 2-WIRE JACKFIELD
45				REVISION: 2-WIRE JACKFIELD
46				REVISION: 2-WIRE JACKFIELD
47				REVISION: 2-WIRE JACKFIELD
48				REVISION: 2-WIRE JACKFIELD
49				REVISION: 2-WIRE JACKFIELD
50				REVISION: 2-WIRE JACKFIELD



(10) TRI-JACKS
SCHEMATIC
2-WIRE WITH MONITOR
TYPICAL OF 48 CIRCUITS
SEE CONNECTION TABLE



CUSTOMER DRAWING

THIS DRAWING DISCLOSES A DESIGN CONSIDERED PROPRIETARY IN NATURE, DEVELOPED AND MANUFACTURED BY BRITCHGRAFF, INC. AND IS RELEASED ON A CONFIDENTIAL BASIS FOR IDENTIFICATION PURPOSES ONLY.

UNLESS OTHERWISE SPECIFIED:

- 1. DECIMAL DIMENSIONS ± .005
- 2. FRACTIONAL DIMENSIONS ± 1/64
- 3. ANGLES ± 1/8°
- 4. ALL DIMS. CONCENTRIC UNLESS NOTED
- 5. ALL DIMENSIONS IN INCHES
- 6. FOR THIS DRAWING USE UNITED PLUG AND RECEPTACLE
- 7. REMOVE ALL BURRS
- 8. PART TO BE FABRICATED AS SPECIFIED HAVE NO DIMENSIONAL ALLOWANCES FROM APPLIED DIMENSIONS, E.G. PARTS, FINISHING, ETC.
- 9. HOLD ON DATE SPECIFICATIONS MUST BE ADHERED TO UNTIL ± .002

DESIGNED BY	DATE	FINISH
13 JUN. 77		
CHECKED BY	DATE	PER FINISH SPEC. NO.
10 JUN. 77		
APPROVED BY	DATE	PER MAT. SPEC. NO.
5/19/77		
DATE USED ON		

NAME: 2-WIRE JACKFIELD
CONNECTORIZED-MODULAR

PART NO: TT2W48M0N1

REV: F